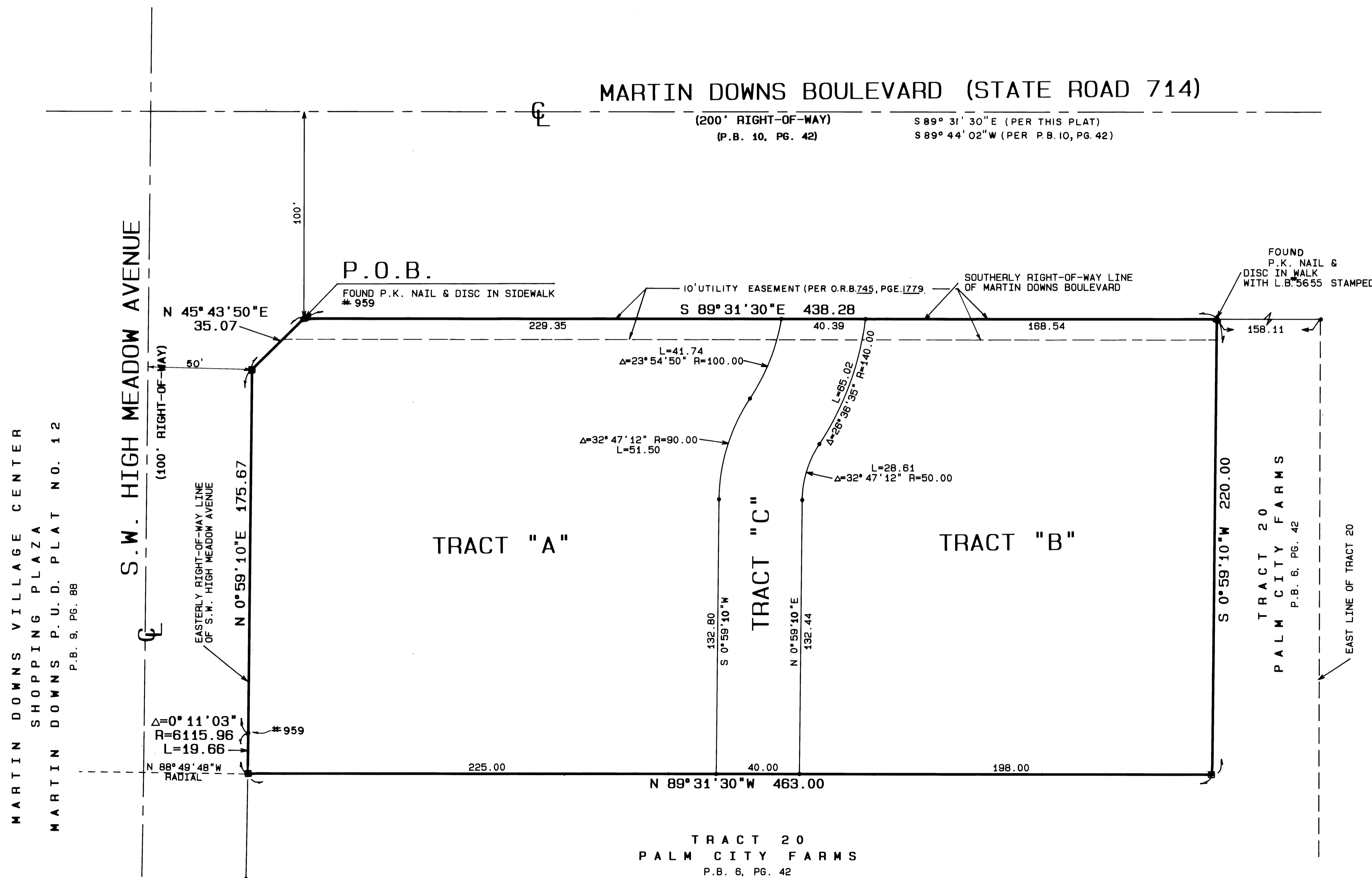
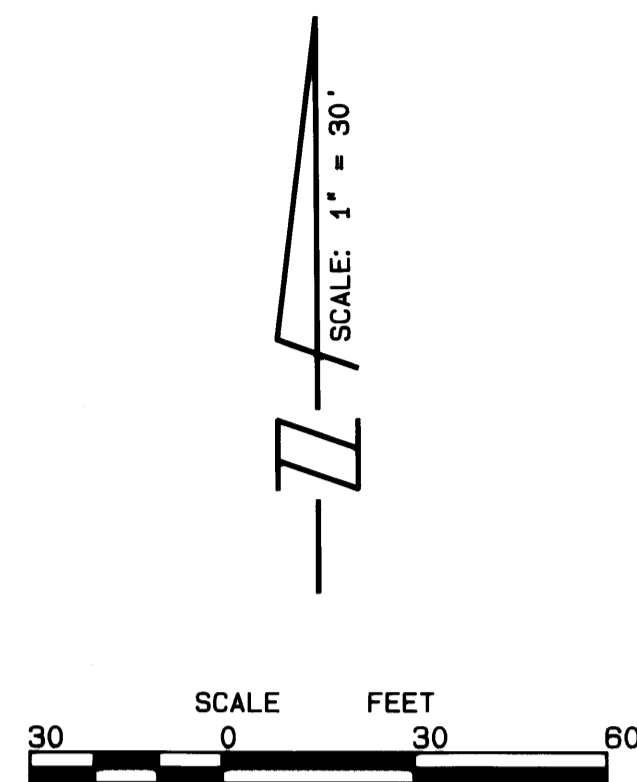


PLAT NO. 60 MARTIN DOWNS P.U.D. BEING A PORTION OF PARCEL 37

BEING A REPLAT OF A PORTION OF TRACT 20, PALM CITY FARMS
AS RECORDED IN PLAT BOOK 6, PAGE 42
PUBLIC RECORDS OF PALM BEACH (NOW MARTIN) COUNTY, FLORIDA.
LYING IN SECTION 13, TOWNSHIP 38 SOUTH, RANGE 40 EAST
MARTIN COUNTY, FLORIDA

SEPTEMBER, 1991

Plat Book 12
Page 91



MARTIN DOWNS VILLAGE CENTER
SHOPPING PLAZA
MARTIN DOWNS P.U.D. PLAT NO. 12
P.B. 9, PG. 88

FOUND
P.K. NAIL &
DISC IN WALK
WITH L.B.#5655 STAMPED

- LEGEND:**
- - DENOTES P.R.M. (PERMANENT REFERENCE MONUMENT) FOUND #959 SET
 - P.O.B. - POINT OF BEGINNING
 - U.E. - UTILITY EASEMENT
 - D.E. - DRAINAGE EASEMENT
 - P.B. - PLAT BOOK
 - PG. - PAGE
 - - CENTERLINE
 - - IRON ROD & CAP FOUND

BEARING BASE:
THE CENTERLINE OF MARTIN DOWNS BOULEVARD IS
TAKEN TO BEAR S 89° 31' 30" E AND ALL BEARINGS
SHOWN HEREON ARE RELATIVE THERETO.

THIS PLAT PREPARED BY
THOMAS C. VOKOUN
FOR:
LINDAHL, BROWNING, FERRARI & HELLSTROM, INC.

LINDAHL, BROWNING, FERRARI & HELLSTROM, INC. CONSULTING ENGINEERS, PLANNERS & SURVEYORS	
P.O. BOX 727 JUPITER, FLORIDA 33468	2865 15th AVENUE VERO BEACH, FLORIDA 32908
2222 COLONIAL ROAD SUITE 201 FORT PIERCE, FLORIDA 34950	10 CENTRAL PARKWAY SUITE 420 STUART, FLORIDA 34994

2 2